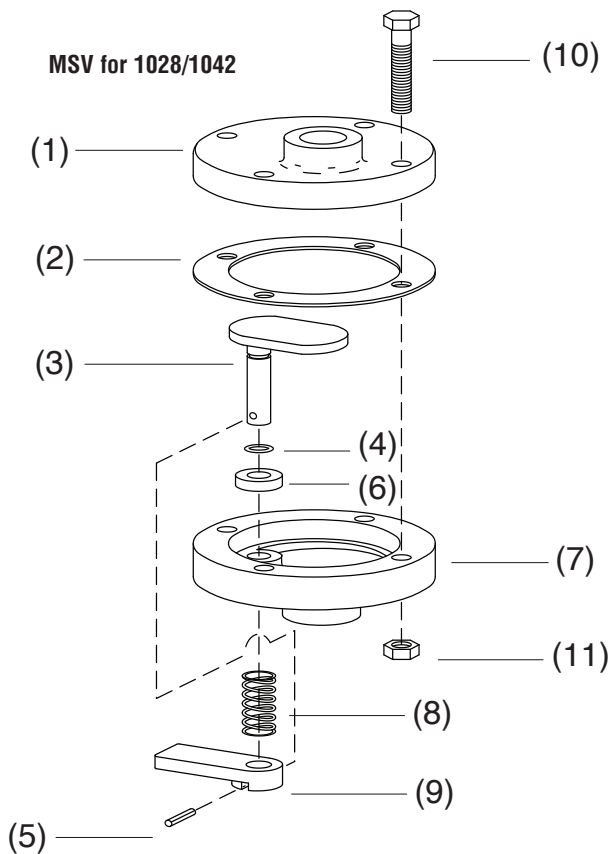


Description Stock# Wt.

**OM 04124**

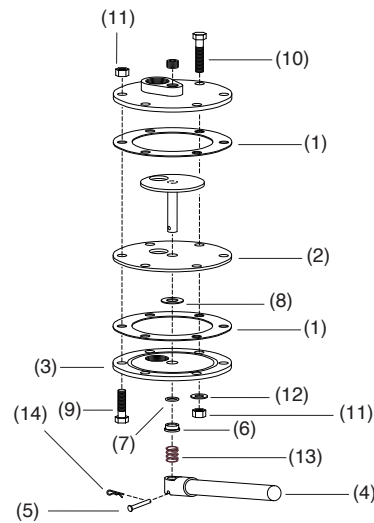
- (-) **MSV Metering Valve** .....01247
- 1. MSV top casting.....01258
- 2. Gasket, valve body.....01260
- 3. Metering plate & stem.....01261
- 4. O-ring.....00794
- 5. Pin, spring .....01263
- 6. Washer, nylon.....01266
- 7. MSV bottom casting .....01259
- 8. Spring, 17/32" OD X 1".....02178
- 9. MSV Handle.....01262
- 10. Cap screw, 5/16-NC x 1-3/4" .....purchase locally
- 11. Nut, 5/16-NC hex .....purchase locally



Description Stock# Wt.

**OM 05658**

- (-) **LPV Metering Valve** .....05680
- 1. Rubber gasket, 2 required.....02424
- 2. Disc, stainless.....02425
- 3. Lower body.....02426
- 4. Handle, abr mtrg, hvy dty.....20498
- 5. Pin, clevis 1/4 x 1-3/8".....20246
- 6. Packing gland .....02437
- 7. O-ring, 7/8" OD x 5/8" ID.....21165
- 8. Gasket, shaft abr valve.....02439
- 9. Screw, 1/2" x 1-3/4", hex head, 4 required .....03455
- 10. Screw, 1/2" x 2-1/2", hex head, 2 required .....03457
- 11. Nut, 1/2" hex, 6 required.....03511
- 12. Washer, 1/2" SAE flat, 2 required .....03515
- 13. Spring .....05633
- 14. Pin, hitch, cotter, 1/4"-5/16".....20245



**OM 09351**

- (-) **MPV Metering Valve** .....04321
- (-) **Wye, 1-1/4" pipe** .....01818
- 1. Tube, pinch valve.....04635
- 2. Metering knob assem.....05072
- 3. Inspection plate.....02440
- 4. O-ring, 1-3/4" OD.....01990
- 5. 45° adaptor flange .....05672
- 6. Flange adaptor .....05673
- 7. Cover plate.....05674

